

RESIDENCE AMID THE INDIAN PAINTBRUSH

TETON COUNTY, WYOMING, USA

DUBBE-MOULDER ARCHITECTS

Utilising traditional log and stone materials, this home displays texture, site and functional space in a way that epitomises the idyllic mountain retreat. The goal of the design was to create an authentic Western lodge with respect for the original Rocky Mountain lodges scattered throughout the region. This retreat evokes the peace and serenity of its natural surroundings with accommodation for modern day technology and comfort. Particular attention was paid to the need for prominent outdoor living spaces designed for entertaining and relaxing with friends.

The structure is built into the side of a steep slope that virtually hugs the hillside. As a result, each of the three floors has grade-level access to an exterior living space or yard. This design puts each indoor and outdoor living space at an elevation that yields breathtaking views, both nearby and distant. To facilitate easy transitions from each floor, guests can either take the stairs or the elevator running from the first floor garage/games room/exercise room to the second-floor living room, kitchen and master bedroom and the third-floor office and guest suites.

The feeling of a Western lodge was created using a variety of regional materials on the exterior, such as a stone façade that frames reclaimed barn wood garage doors, floor-to-ceiling windows, exposed logs, hand-split cedar shingles and dry-stacked Montana stone. Exterior patios, terraces and decks work with these materials to create comfortable outdoor living spaces. The overall ambiance is further enhanced by a natural stone staircase, which gently climbs the grade to the main entrance of the home.

Upon entry, visitors are met with a spacious great room with log rafters, a rich hickory floor, plentiful windows and a massive stone fireplace that combined emanate a warm, golden glow. The room is designed to be a social hub with panoramic views of the Jackson Hole Valley.

Several unique outdoor living spaces are provided throughout the residence, including a sod roof over the garage, which reaches to a large deck wrapping the kitchen, dining and great room, creating the perfect venue for outdoor dinner parties or a quiet visit. Additional outdoor living spaces are the screened porch off the kitchen, which is an ideal place to enjoy an evening without wind and insects and a private screened porch in the master suite, showcasing views of the Grand Tetons and providing access to the outdoor hot tub.

1 A simple, gridded glass wall at the stairwell provides an interesting backdrop for the serene setting afforded by the sod roof over the garage



2 Second floor plan

3 The sod roof over the garage allows for tremendous sweeping views of the Jackson Hole valley

4 Third floor plan

5 The living room and its outdoor deck provide nearby views of the forest, as well as panoramic views of the valley below

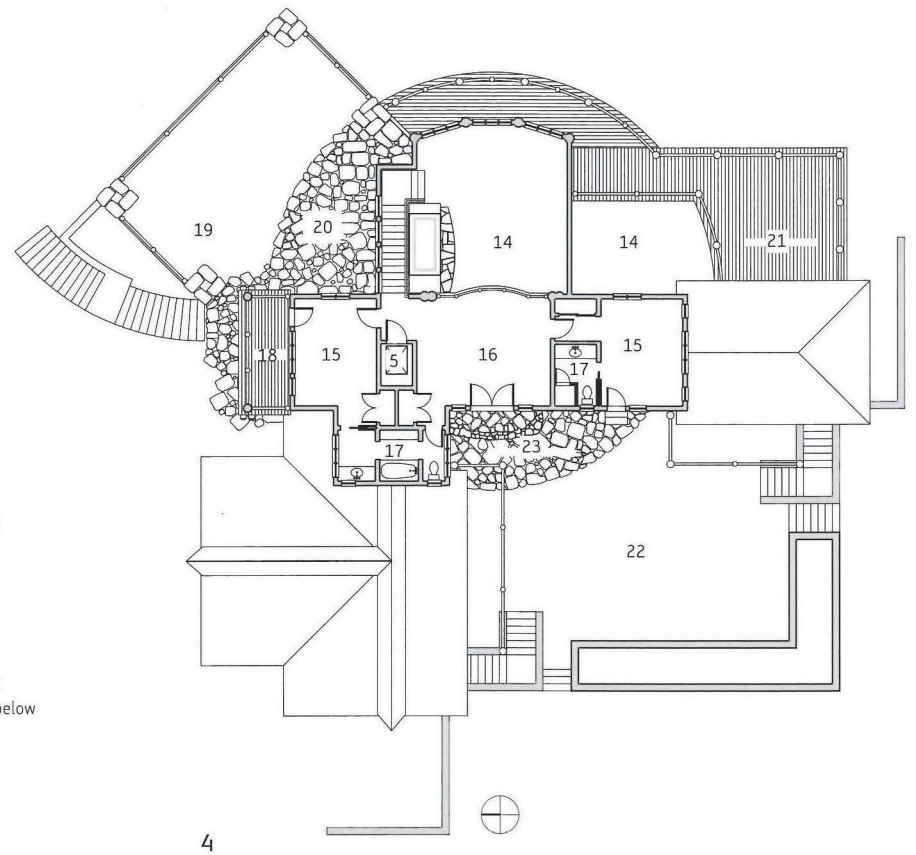
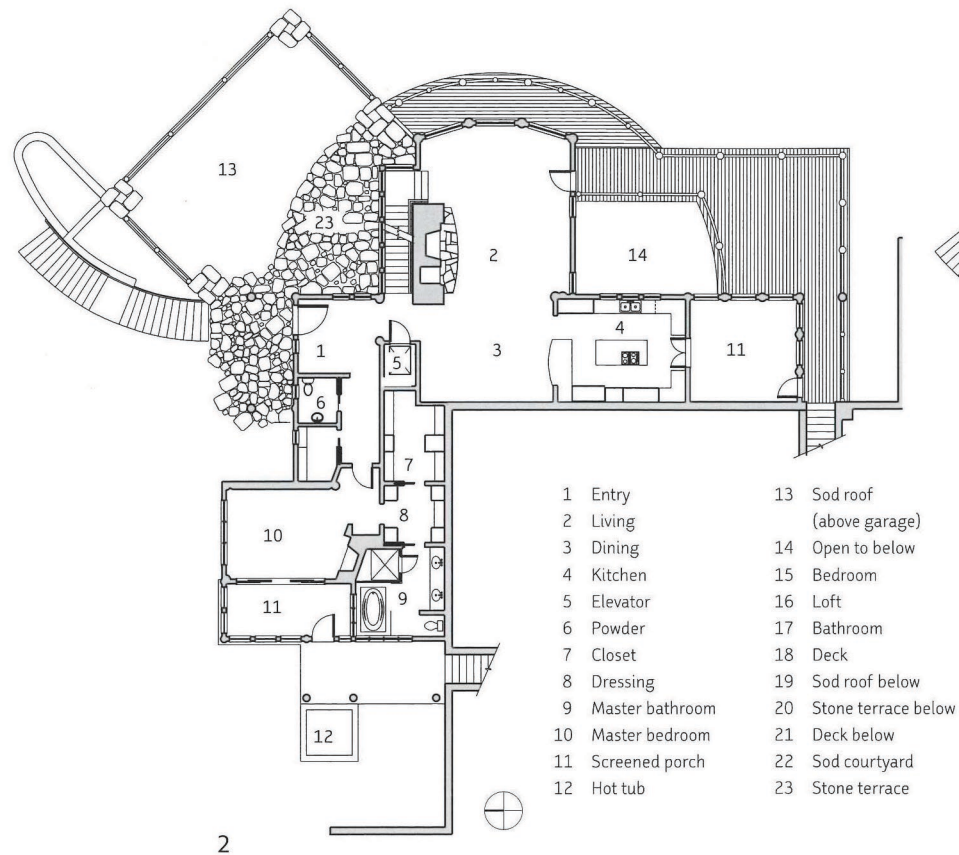
6 Designing the house for the steep site allows for the ability to walk out to grade on each floor

7 The kitchen was completed with knotty alder cabinets

8 The screened dining porch is a great place to play a board game in a 'camp' atmosphere

9 Master bedroom and private screened porch accessing outdoor hot tub

Photography: Cameron Nielsen, The Seen



3

5



TWO WOLVES RESIDENCE

TETON COUNTY, WYOMING, USA

DUBBE-MOULDER ARCHITECTS

A picturesque, ski-in/ski-out private residence, Two Wolves is located at the base of the Jackson Hole Mountain Resort in Teton County, Wyoming. In collaboration with the owners, Dubbe-Moulder Architects designed a residence with a quiet presence that is integrated with the outdoors and epitomises the winter country home. A steep treed site created a dramatic backdrop and a platform for the residence to meld into the landscape.

A mix of details, texture and materials creates a visually appealing composition of regional materials on the façade. Combinations of vertical shiplap, horizontal plank and chink, horizontal bevelled siding, large plate glass windows, smooth and rough tile, excavated boulders and dry-stacked Montana stone were used to break up the faces.

Outdoor living spaces surround the residence and extend the overall living space of the property. In addition to private balconies and public terraces, an outdoor spa offers a place to relax and enjoy the mountain views. Direct from the mountain, weary skiers are welcomed by a heated patio, a jetted hot tub and a gas fire.

Intended to surprise visitors moving through the home, the split-level entry relieves guests from travelling a full flight of stairs to get to the main level or to the basement. It redirects their interest to the curved staircase flanking the entryway, which in turn sparks intrigue about what lies at each end. The stairs lead to the main level where it is possible to see through almost the entire house. An open floor plan for living, dining and kitchen achieves the owners' vision of being able to comfortably entertain both small and large groups. The flexible, open space amplifies the indoor-outdoor relationship.

To define functional areas, ceiling beams and wall treatments create boundaries while retaining an open feeling. Two glass hallways extend from either side of the kitchen, drawing visitors through to discover private spaces. The suites in these spaces are well appointed and have a fireplace, private bath, sitting area and a balcony or patio. From the kitchen, the curved staircase winds up to a small loft, with an office and private balcony. The lower level to the left of the entry leads to the fireside games room, which includes an entertainment centre, a pool table and two guest suites. This wing has everything required for an enjoyable evening after skiing.

- 1 *A grand entry welcomes guests to this ski-in/ski-out residence*
- 2 *Each bedroom suite has a private balcony*
- 3 *A view showing the house set into the mountainside*
- 4 *Surrounded by the forest, the terrace, with its hot tub and fireplace, provides memorable entertaining experiences*

1



3



4



2

- 5 Master bedroom suite leading to outdoor terrace
- 6 Floor plan
- 7 Lower-level game and entertainment room
- 8 Ample glass allows the living room to have an outdoor experience
- 9 The open plan allows for living, dining and kitchen to maximise entertaining options
- 10 Living room

Photography: David Stubbs Photography

